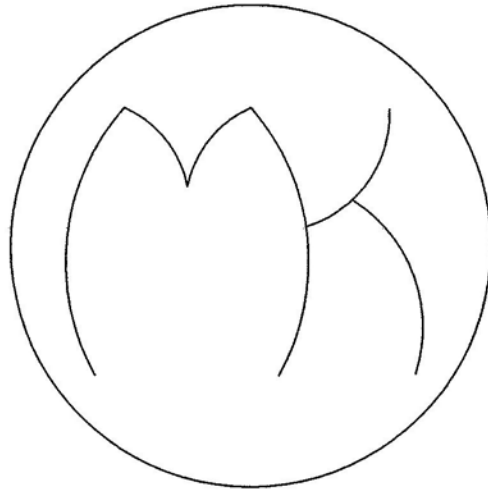


ACCESSORIES



COVER PLATES

3-2 THRU 3-6

TAPPING PLATES

3-7 THRU 3-9

TRANSITION PLATES

3-10 THRU 3-18

MED-KAS HYDRAULICS, INC.

P.O. BOX 1163

1419 JOHN R

TROY, MI. 48099

TROY, MI. 48083

TEL: 248-585-3220

FAX # 248 585-0646

WEB SITE: www.med-kas.com

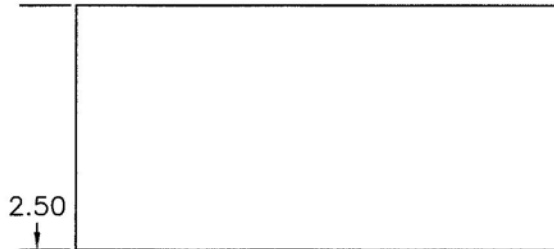
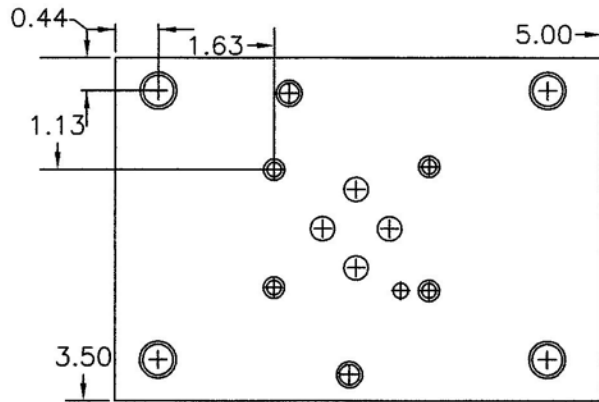
E-MAIL: info@med-kas.com

TRANSITION PLATES

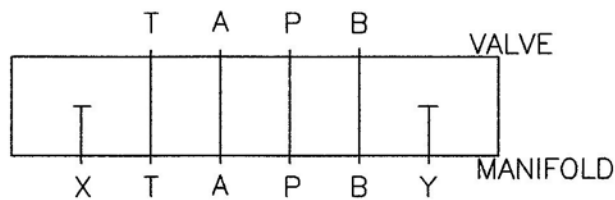
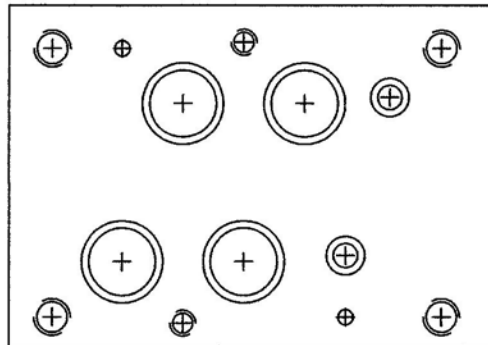
SEE TECHNICAL INFORMATION SECTION FOR VALVE MOUNTING DIMENSIONS

ADAPTS D03 VALVE TO D07 INTERFACE

PART NO. BY-BE



TRANSITION PLATE INCLUDES:
 4- .375-16 X 2.500 SHCS
 2- .250-20 X 2.375 SHCS
 2- #109 O'RINGS
 4- #117 O'RINGS
 2- .125 X .375 ROLL PINS
 MATERIAL: STEEL



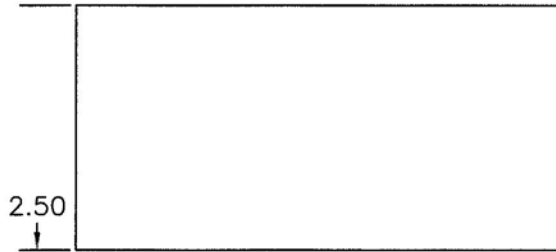
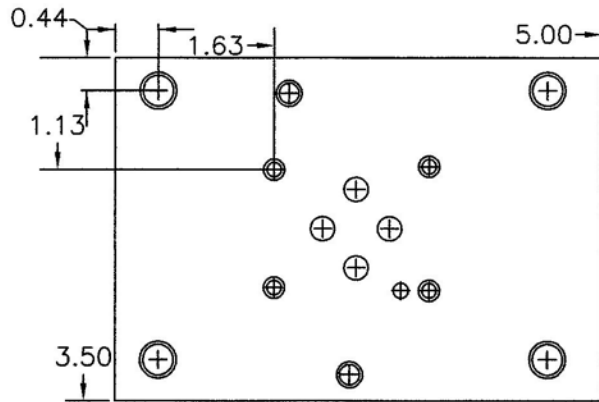
MED-KAS HYDRAULICS, INC.
 P.O. BOX 1163 1419 JOHN R
 TROY, MI. 48099 TROY, MI. 48083
 TEL: 248-585-3220 FAX # 248 585-0646
 WEB SITE: www.med-kas.com E-MAIL: info@med-kas.com

TRANSITION PLATES

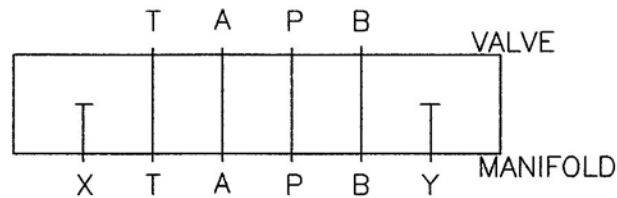
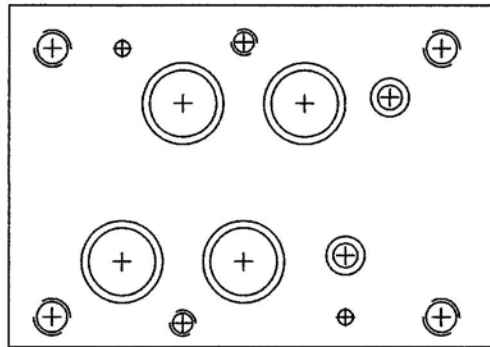
SEE TECHNICAL INFORMATION SECTION FOR VALVE MOUNTING DIMENSIONS

ADAPTS D03 VALVE TO D07 INTERFACE

PART NO. BY-BE



TRANSITION PLATE INCLUDES:
 4- .375-16 X 2.500 SHCS
 2- .250-20 X 2.375 SHCS
 2- #109 O'RINGS
 4- #117 O'RINGS
 2- .125 X .375 ROLL PINS
 MATERIAL: STEEL



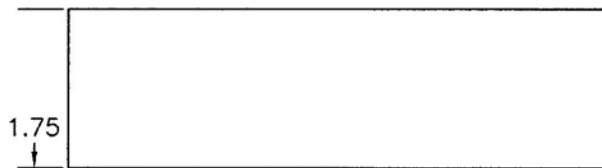
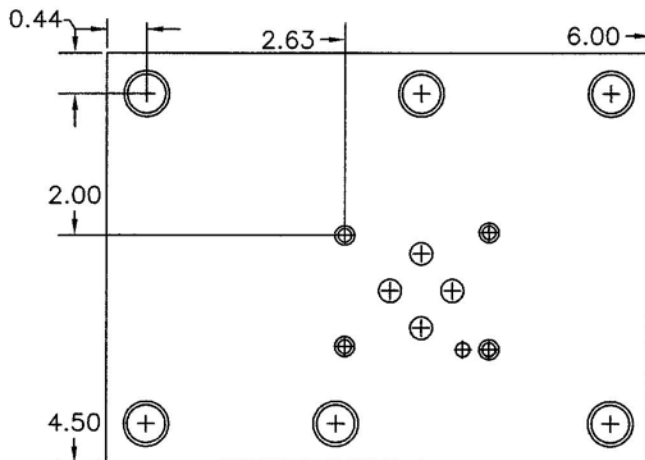
MED-KAS HYDRAULICS, INC.
 P.O. BOX 1163 1419 JOHN R
 TROY, MI. 48099 TROY, MI. 48083
 TEL: 248-585-3220 FAX # 248 585-0646
 WEB SITE: www.med-kas.com E-MAIL: info@med-kas.com

TRANSITION PLATES

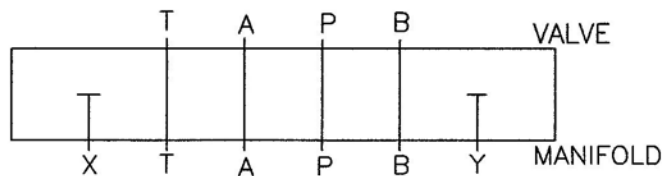
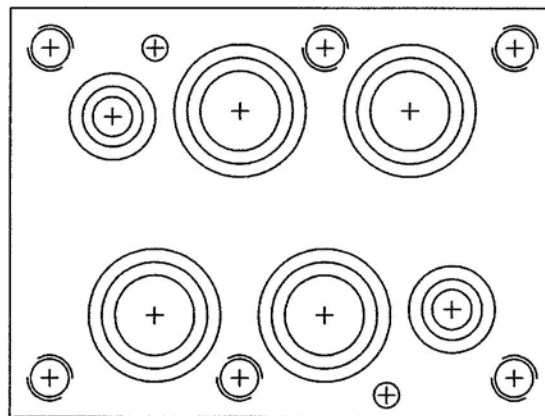
SEE TECHNICAL INFORMATION SECTION FOR VALVE MOUNTING DIMENSIONS

ADAPTS D03 VALVE TO D08 INTERFACE

PART NO. BY-CV



TRANSITION PLATE INCLUDES:
 6- .500-13 X 1.750 SHCS
 2- #210 O'RINGS
 4- #214 O'RINGS
 2- .250 X .625 ROLL PINS
 MATERIAL: STEEL



MED-KAS HYDRAULICS, INC.
 P.O. BOX 1163 1419 JOHN R
 TROY, MI. 48099 TROY, MI. 48083
 TEL: 248-585-3220 FAX # 248 585-0646
 WEB SITE: www.med-kas.com E-MAIL: info@med-kas.com

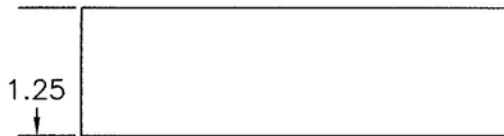
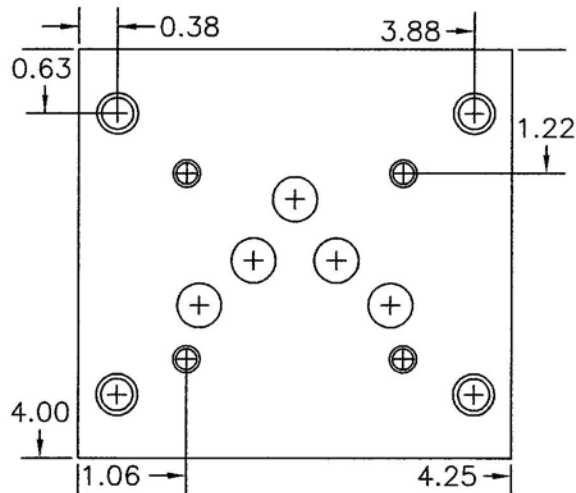
SPECIFICATIONS SUBJECT TO CHANGE WITHOUT NOTICE

TRANSITION PLATES

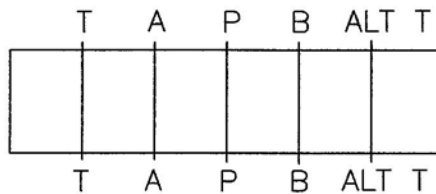
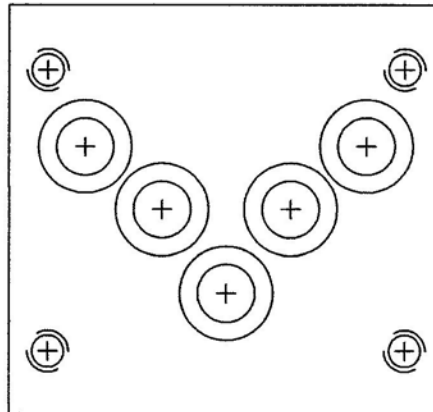
SEE TECHNICAL INFORMATION SECTION FOR VALVE MOUNTING DIMENSIONS

ADAPTS D05 VALVE TO D06 INTERFACE

PART NO. A-B



TRANSITION PLATE INCLUDES:
 4- .375-16 X 1.250 SHCS
 5- #115 O'RINGS
 MATERIAL: STEEL



MED-KAS HYDRAULICS, INC.

P.O. BOX 1163 1419 JOHN R
 TROY, MI. 48099 TROY, MI. 48083

TEL: 248-585-3220 FAX # 248 585-0646

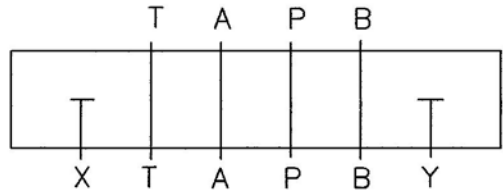
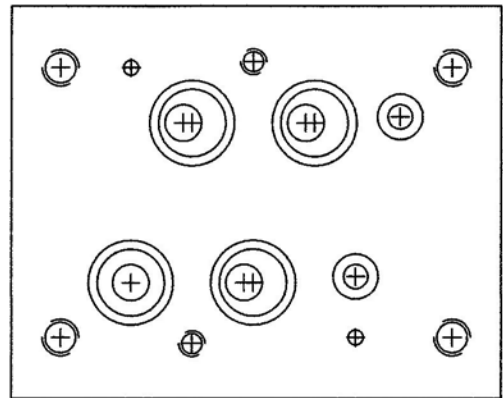
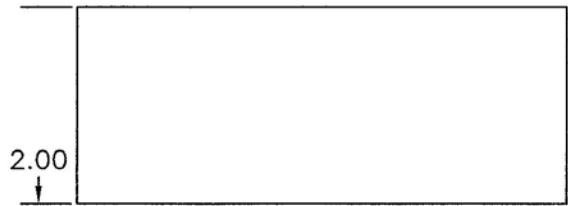
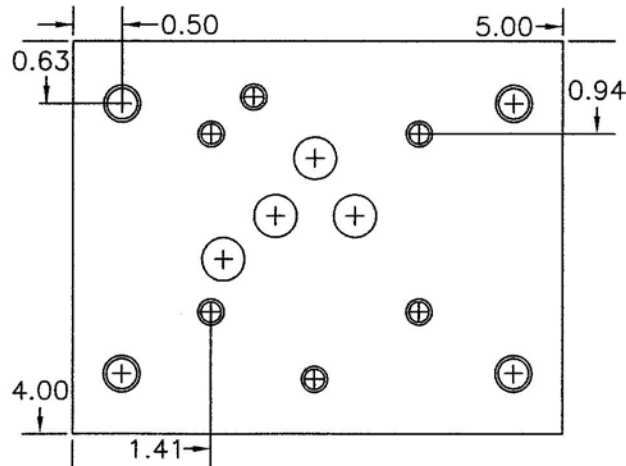
WEB SITE: www.med-kas.com E-MAIL: info@med-kas.com

TRANSITION PLATES

SEE TECHNICAL INFORMATION SECTION FOR VALVE MOUNTING DIMENSIONS

ADAPTS D05 VALVE TO D07 INTERFACE

PART NO. A-BE



TRANSITION PLATE INCLUDES:
 4- .375-16 X 2.000 SHCS
 2- .250-20 X 1.875 SHCS
 2- #109 O'RINGS
 4- #117 O'RINGS
 2- .125 X .375 ROLL PINS
 MATERIAL: STEEL

NOTE: THIS IS THE SAME CONFIGURATION FOR D05H VALVES
 PLEASE CONTACT THE MANUFACTURER FOR SPECIFIC APPLICATIONS



MED-KAS HYDRAULICS, INC.
 P.O. BOX 1163 1419 JOHN R
 TROY, MI. 48099 TROY, MI. 48083
 TEL: 248-585-3220 FAX # 248 585-0646
 WEB SITE: www.med-kas.com E-MAIL: info@med-kas.com

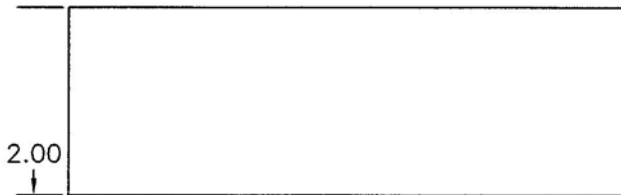
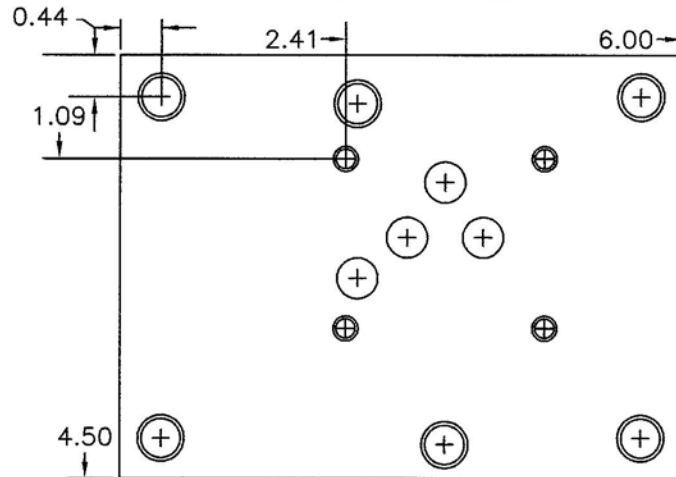
SPECIFICATIONS SUBJECT TO CHANGE WITHOUT NOTICE

TRANSITION PLATES

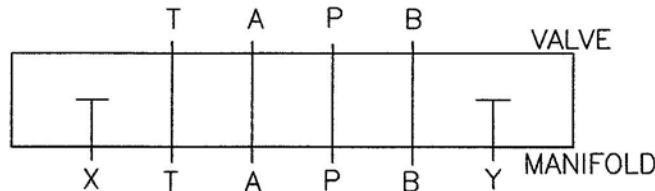
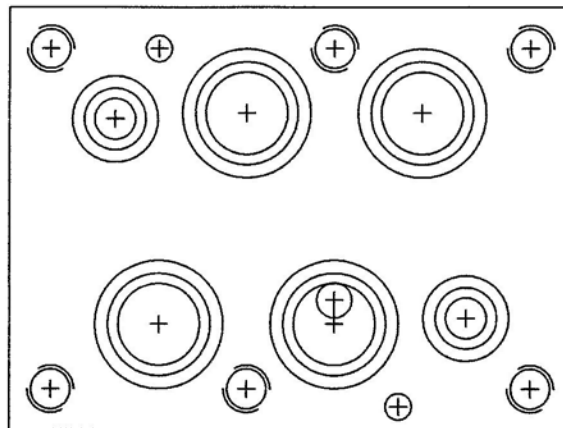
SEE TECHNICAL INFORMATION SECTION FOR VALVE MOUNTING DIMENSIONS

ADAPTS D05 VALVE TO D08 INTERFACE

PART NO. A-CV



TRANSITION PLATE INCLUDES:
 6- .500-13 X 2.25 SHCS
 2- #210 O'RINGS
 4- #214 O'RINGS
 2- .250 X .625 ROLL PINS
 MATERIAL: STEEL



NOTE: THIS IS THE SAME CONFIGURATION FOR D05H VALVES
 PLEASE CONTACT THE MANUFACTURER FOR SPECIFIC APPLICATIONS



MED-KAS HYDRAULICS, INC.

P.O. BOX 1163

TROY, MI. 48099

TEL: 248-585-3220

WEB SITE: www.med-kas.com

1419 JOHN R

TROY, MI. 48083

FAX # 248 585-0646

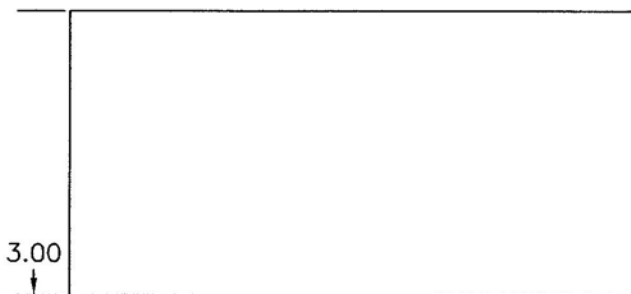
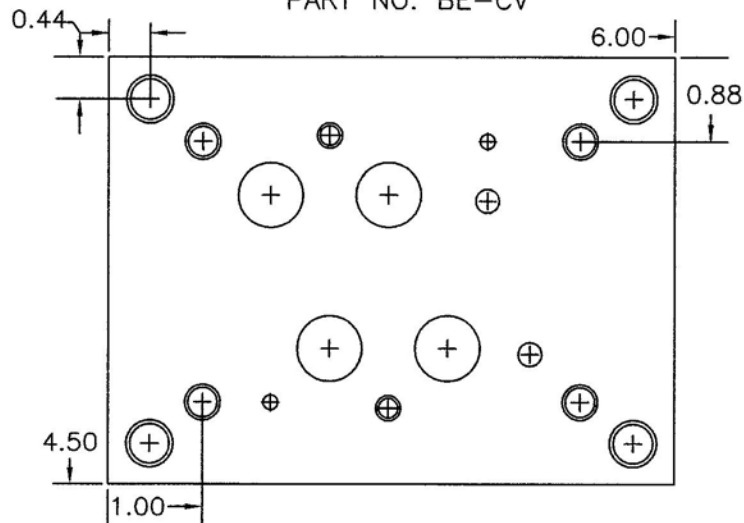
E-MAIL: info@med-kas.com

TRANSITION PLATES

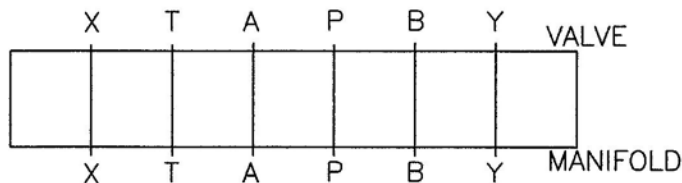
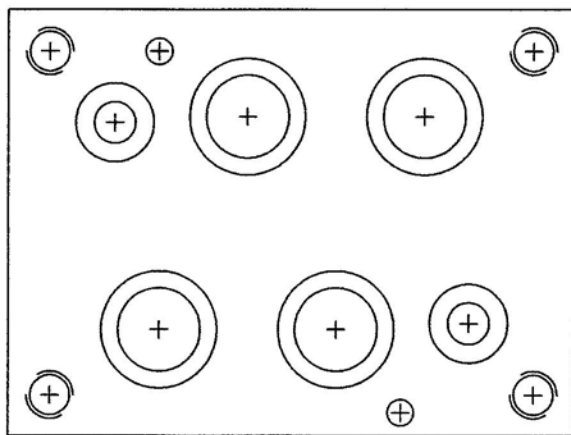
SEE TECHNICAL INFORMATION SECTION FOR VALVE MOUNTING DIMENSIONS

ADAPTS D07 VALVE TO D08 INTERFACE

PART NO. BE-CV



TRANSITION PLATE INCLUDES:
 4- .500-13 X 2.750 SHCS
 2- #210 O'RINGS
 4- #214 O'RINGS
 2- .250 X .625 ROLL PINS
 MATERIAL: STEEL



MED-KAS HYDRAULICS, INC.
 P.O. BOX 1163 1419 JOHN R
 TROY, MI. 48099 TROY, MI. 48083
 TEL: 248-585-3220 FAX # 248 585-0646
 WEB SITE: www.med-kas.com E-MAIL: info@med-kas.com

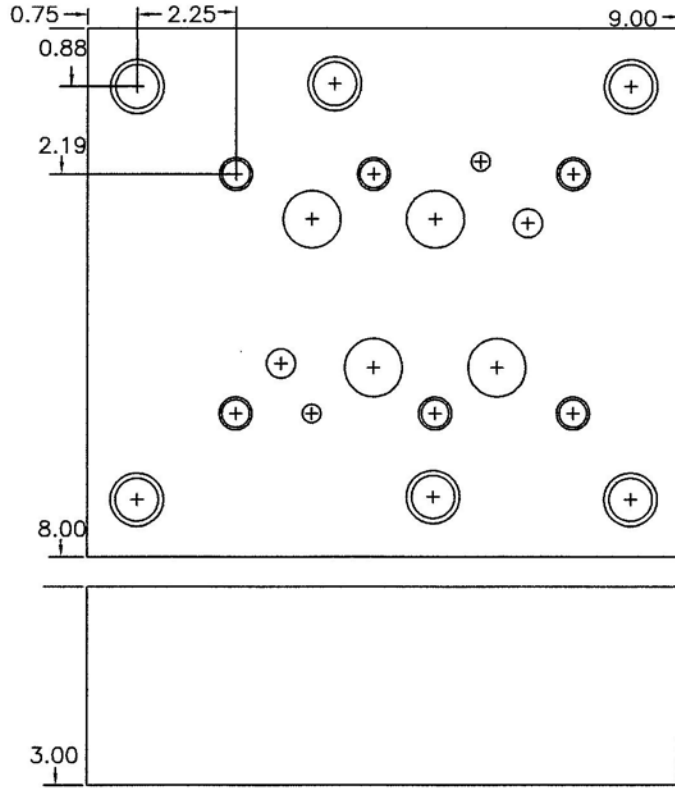
SPECIFICATIONS SUBJECT TO CHANGE WITHOUT NOTICE

TRANSITION PLATES

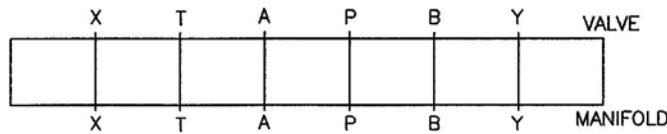
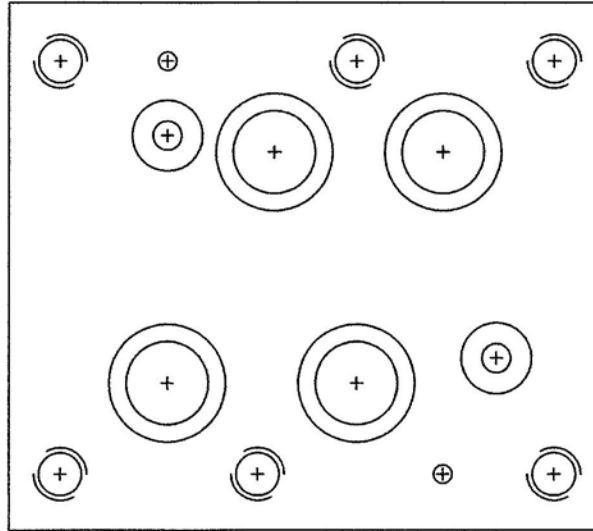
SEE TECHNICAL INFORMATION SECTION FOR VALVE MOUNTING DIMENSIONS

ADAPTS D08 VALVE TO D10 INTERFACE

PART NO. CV-D



TRANSITION PLATE INCLUDES:
 6- .750 X 3.000 SHCS
 2- #210 O'RINGS
 4- #222 O'RINGS
 2- .250 X .625 ROLL PINS
 MATERIAL: STEEL



MED-KAS HYDRAULICS, INC.

P.O. BOX 1163

TROY, MI. 48099

TEL: 248-585-3220

WEB SITE: www.med-kas.com

1419 JOHN R

TROY, MI. 48083

FAX # 248 585-0646

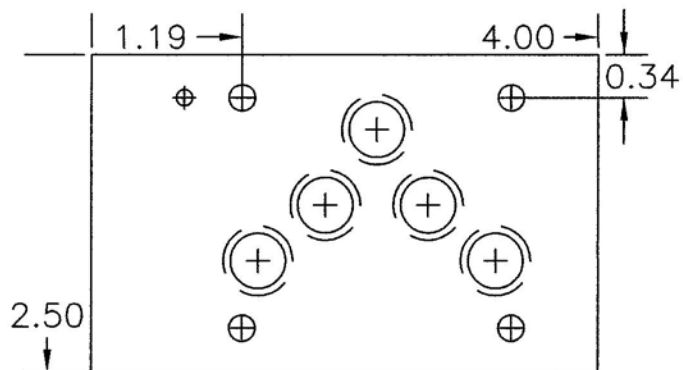
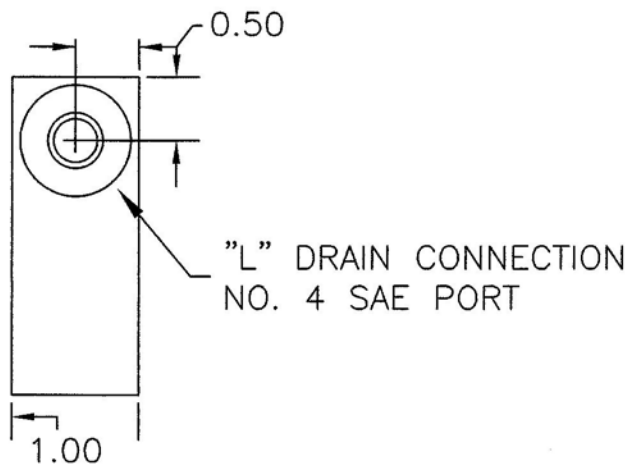
E-MAIL: info@med-kas.com

TRANSITION PLATES

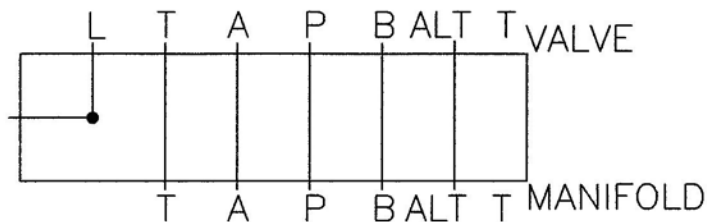
SEE TECHNICAL INFORMATION SECTION FOR VALVE MOUNTING DIMENSIONS

ADAPTS D05 VALVE WITH "L" DRAIN TO D05 INTERFACE

PART NO. JE-A



TRANSITION PLATE INCLUDES:
5- #014 O'RINGS
MATERIAL: STEEL



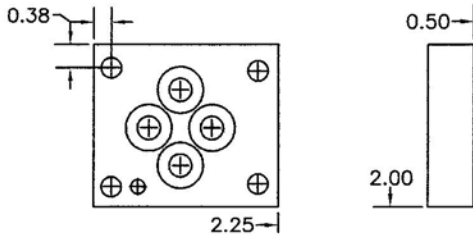
MED-KAS HYDRAULICS, INC.
P.O. BOX 1163 1419 JOHN R
TROY, MI. 48099 TROY, MI. 48083
TEL: 248-585-3220 FAX # 248 585-0646
WEB SITE: www.med-kas.com E-MAIL: info@med-kas.com

SPECIFICATIONS SUBJECT TO CHANGE WITHOUT NOTICE

COVER PLATES

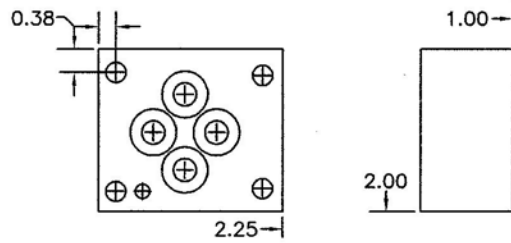
SEE TECHNICAL INFORMATION SECTION FOR VALVE MOUNTING DIMENSIONS

D03 PARALLEL CIRCUIT COVER PLATE
PART NO. BY-C



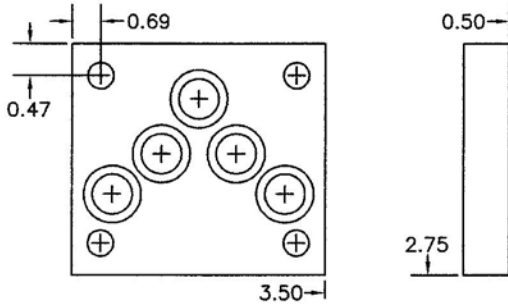
COVER PLATE INCLUDES:
4-#10-24 X .875 SHCS
4-#012 O'RINGS
1-.125 X .375 ROLL PIN
MATERIAL: STEEL

D03 SERIES CIRCUIT COVER PLATE
PART NO. BY-CS



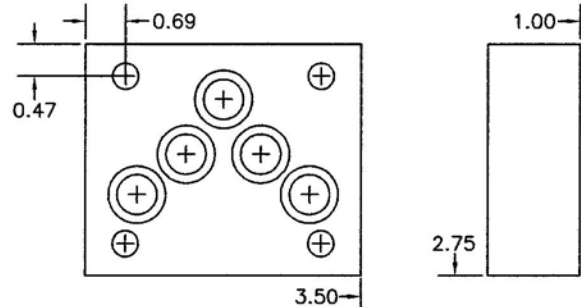
COVER PLATE INCLUDES:
4-#10-24 X 1.375 SHCS
4-#012 O'RINGS
1-.125 X .375 ROLL PIN
MATERIAL: STEEL

D05 PARALLEL CIRCUIT COVER PLATE
PART NO. A-C



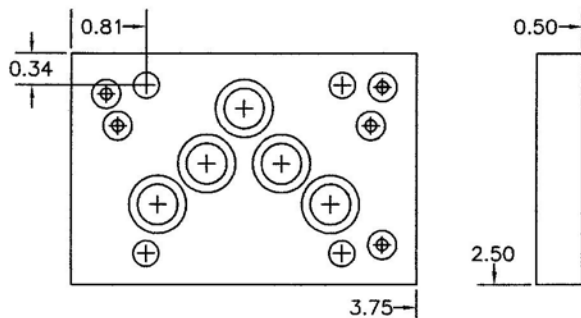
COVER PLATE INCLUDES:
4-.250-20 X .875 SHCS
5-#014 O'RINGS
MATERIAL: STEEL

D05 SERIES CIRCUIT COVER PLATE
PART NO. A-CS



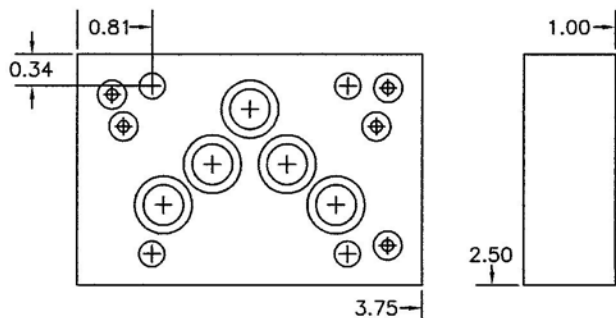
COVER PLATE INCLUDES:
4-.250-20 X 1.375 SHCS
5-#014 O'RINGS
MATERIAL: STEEL

D05H PARALLEL CIRCUIT COVER PLATE
PART NO. D05H-C



COVER PLATE INCLUDES:
4-.250-20 X .875 SHCS
5-#014 O'RINGS
5-#008 O'RINGS
MATERIAL: STEEL

D05H SERIES CIRCUIT COVER PLATE
PART NO. D05H-CS



COVER PLATE INCLUDES:
4-.250-20 X 1.375 SHCS
5-#014 O'RINGS
5-#008 O'RINGS
MATERIAL: STEEL

THIS COVER PLATE IS DESIGNED TO SEAL BOTH THE
USA STANDARD AND THE ISO STANDARD VALVE PATTERNS.



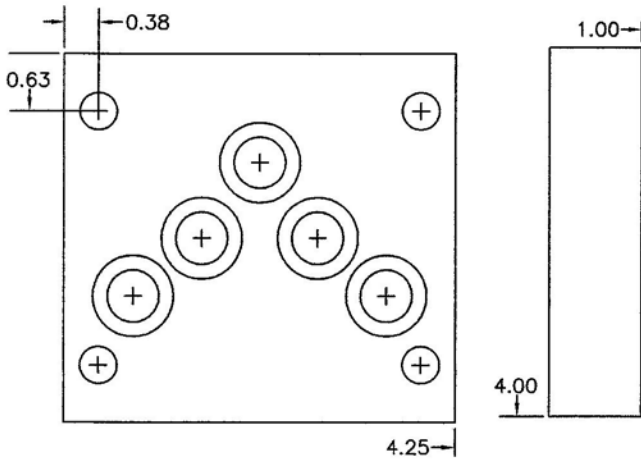
MED-KAS HYDRAULICS, INC.
P.O. BOX 1163 1419 JOHN R
TROY, MI. 48099 TROY, MI. 48083
TEL: 248-585-3220 FAX # 248 585-0646
WEB SITE: www.med-kas.com E-MAIL: info@med-kas.com

SPECIFICATIONS SUBJECT TO CHANGE WITHOUT NOTICE

COVER PLATES

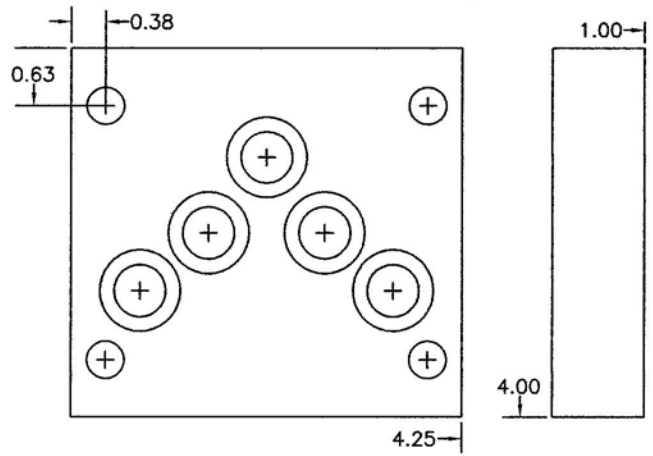
SEE TECHNICAL INFORMATION SECTION FOR VALVE MOUNTING DIMENSIONS

D06 PARALLEL CIRCUIT COVER PLATE
PART NO. B-C



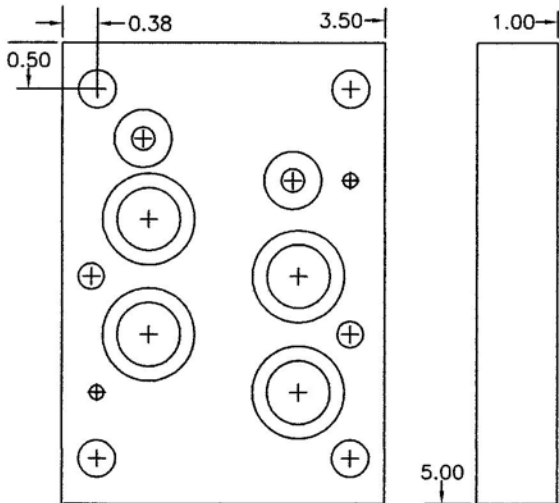
COVER PLATE INCLUDES:
4-.375-16 X 1.500 SHCS
5-#018 O'RINGS
MATERIAL: STEEL

D06 SERIES COVER PLATE
PART NO. B-CS



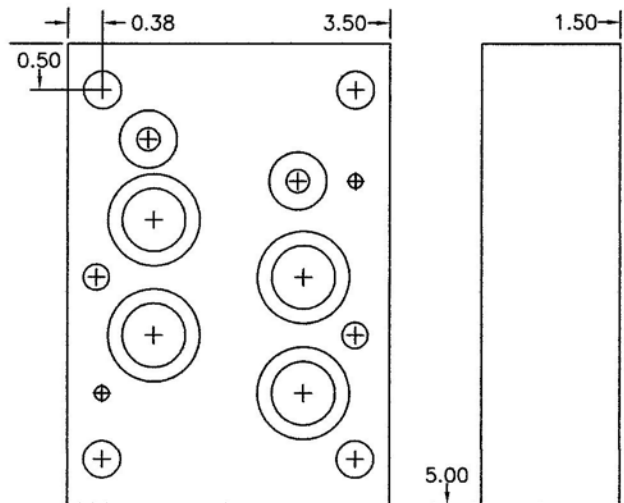
COVER PLATE INCLUDES:
4-.375-16 X 1.500 SHCS
5-#018 O'RINGS
MATERIAL: STEEL

D07 PARALLEL CIRCUIT COVER PLATE
PART NO. BE-C



COVER PLATE INCLUDES:
4-.375-16 X 1.500 SHCS
2-.250-20 X 1.375 SHCS
2-#109 O'RINGS
4-#117 O'RINGS
2-.125 X .375 ROLL PINS
MATERIAL: STEEL

D07 SERIES CIRCUIT COVER PLATE
BE-CS



COVER PLATE INCLUDES:
4-.375-16 X 2.000 SHCS
2-.250-20 X 1.875 SHCS
2-#109 O'RINGS
4-#117 O'RINGS
2-.125 X .375 ROLL PINS
MATERIAL: STEEL

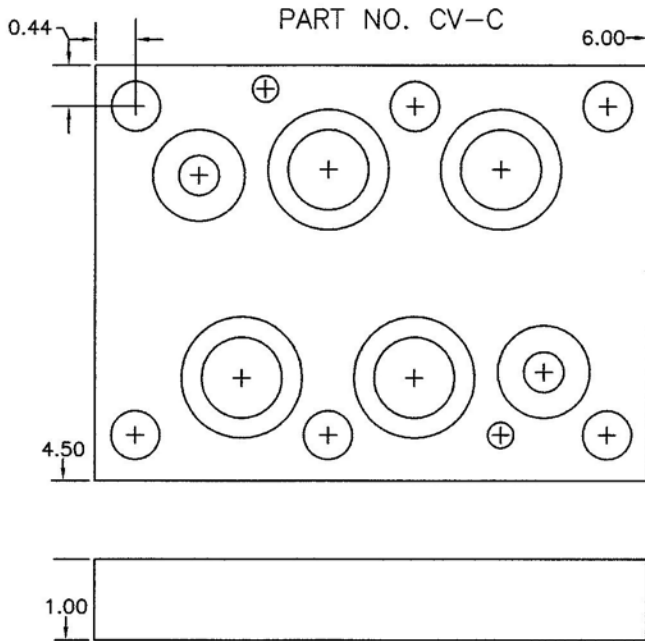


MED-KAS HYDRAULICS, INC.
P.O. BOX 1163 1419 JOHN R
TROY, MI. 48099 TROY, MI. 48083
TEL: 248-585-3220 FAX # 248 585-0646
WEB SITE: www.med-kas.com E-MAIL: info@med-kas.com

COVER PLATES

SEE TECHNICAL INFORMATION SECTION FOR VALVE MOUNTING DIMENSIONS

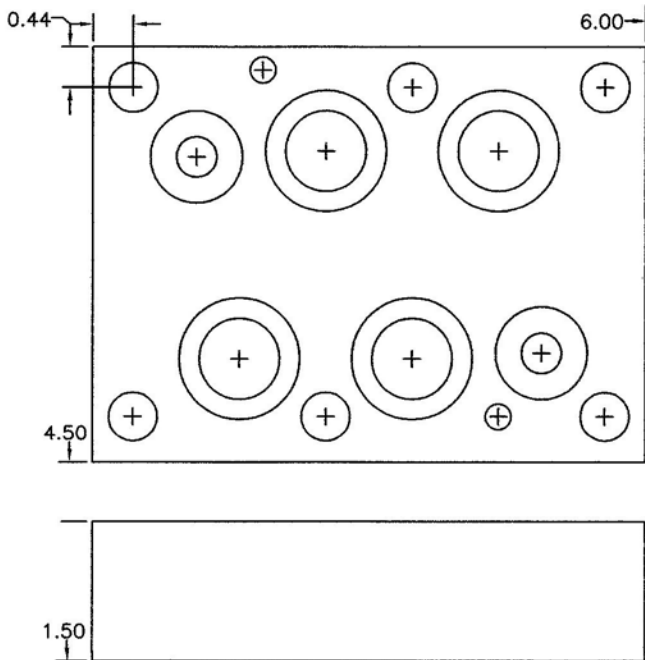
D08 PARALLEL CIRCUIT COVER PLATE



COVER PLATE INCLUDES:
6-.500-13 X 2.25 SHCS
2-#210 O'RINGS
4-#214 O'RINGS
2-.250 X .625 ROLL PINS
MATERIAL: STEEL

D08 SERIES CIRCUIT COVER PLATE

PART NO. CV-CS



COVER PLATE INCLUDES:
6-.500-13 X 2.25 SHCS
2-#210 O'RINGS
4-#214 O'RINGS
2-.250 X .625 ROLL PINS
MATERIAL: STEEL



MED-KAS HYDRAULICS, INC.
P.O. BOX 1163 1419 JOHN R
TROY, MI. 48099 TROY, MI. 48083
TEL: 248-585-3220 FAX # 248 585-0646
WEB SITE: www.med-kas.com E-MAIL: info@med-kas.com

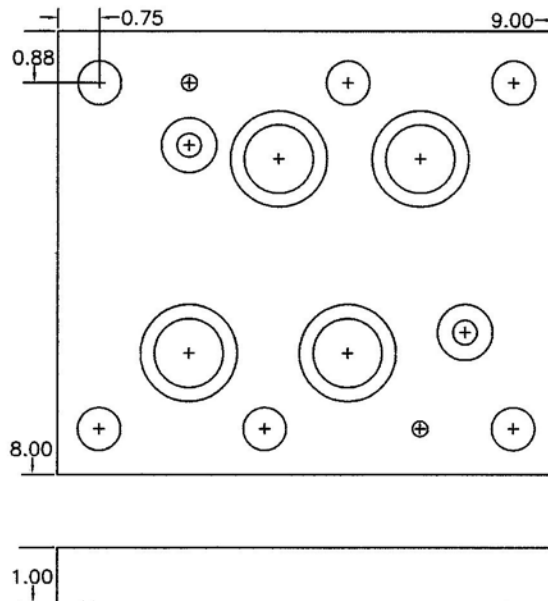
SPECIFICATIONS SUBJECT TO CHANGE WITHOUT NOTICE

COVER PLATES

SEE TECHNICAL INFORMATION SECTION FOR VALVE MOUNTING DIMENSIONS

D10 PARALLEL CIRCUIT COVER PLATE

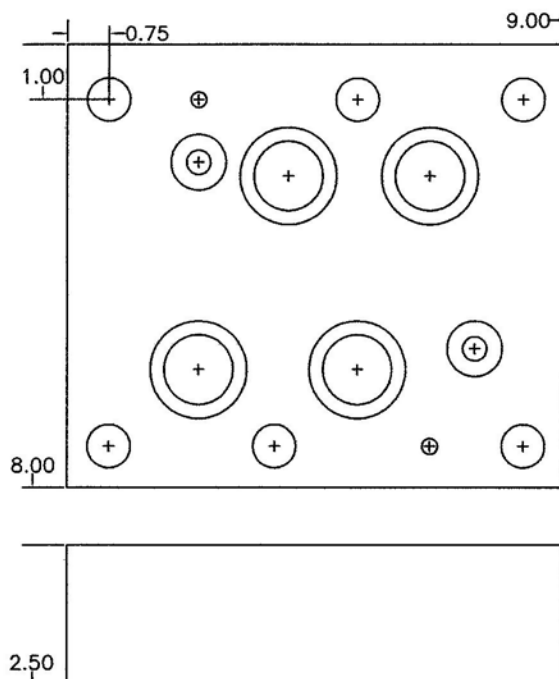
PART NO. D-C



COVER PLATE INCLUDES:
 6-.750-10 X 2.25 SHCS
 2-#210 O'RINGS
 4-#222 O'RINGS
 2-.250 X .625 ROLL PINS
 MATERIAL: STEEL

D10 SERIES CIRCUIT COVER PLATE

PART NO. D-CS



COVER PLATE INCLUDES:
 6-.750-10 X 3.50 SHCS
 2-#210 O'RINGS
 4-#222 O'RINGS
 2-.250 X .625 ROLL PINS
 MATERIAL: STEEL



MED-KAS HYDRAULICS, INC.

P.O. BOX 1163

TROY, MI. 48099

TEL: 248-585-3220

WEB SITE: www.med-kas.com

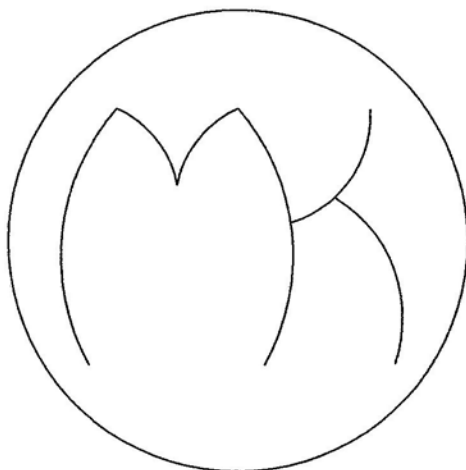
1419 JOHN R

TROY, MI. 48083

FAX # 248 585-0646

E-MAIL: info@med-kas.com

COVER PLATES



VALVE CODE

C-08

C-09

2F06

2F07

R08

P06

P08

P10

2FB07

PART NUMBER

E-C

F-C

U-C

X-C

Q-C

K-C

L-C

N-C

DE-C

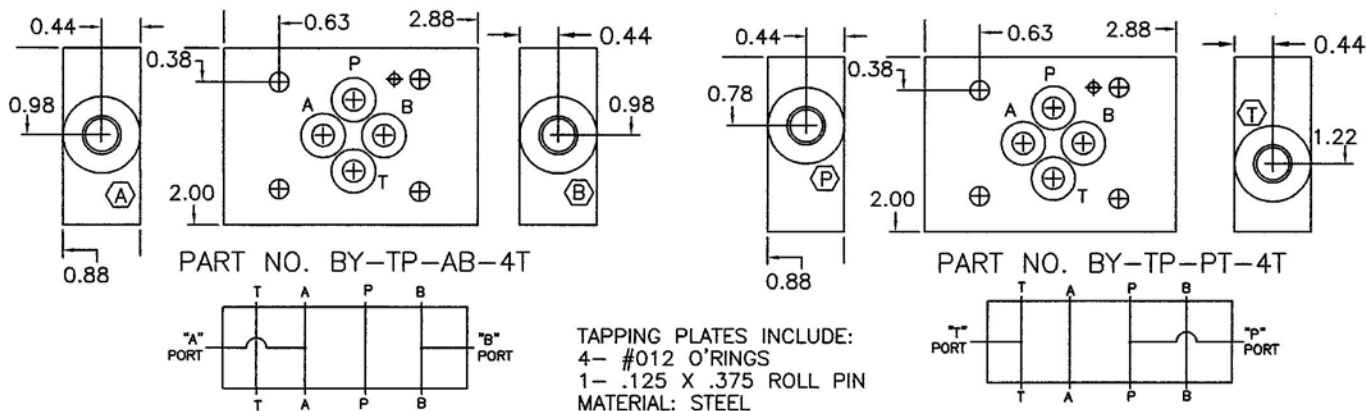
MED-KAS HYDRAULICS, INC.
P.O. BOX 1163 1419 JOHN R
TROY, MI. 48099 TROY, MI. 48083
TEL: 248-585-3220 FAX # 248 585-0646
WEB SITE: www.med-kas.com E-MAIL: info@med-kas.com

SPECIFICATIONS SUBJECT TO CHANGE WITHOUT NOTICE

TAPPING PLATES

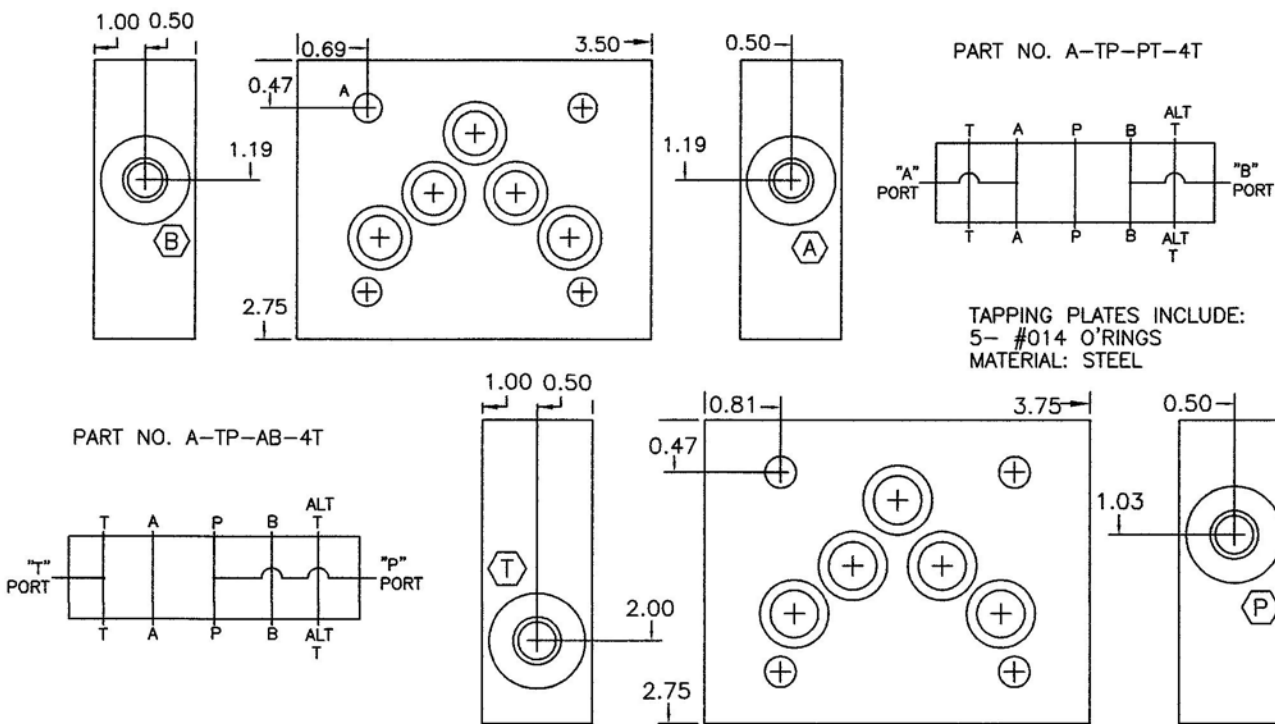
SEE TECHNICAL INFORMATION SECTION, FOR VALVE MOUNTING DIMENSIONS

D03 DESIGNATION **BY-TP-**-4T** PORT TYPE
 TAPPING PLATE DESIGNATION **4T-.437-20 SAE THREAD**
 PORTS TO BE TAKEN EXTERNALLY



NOTE: A PLATE IN THIS CONFIGURATION IS ALSO AVAILABLE FOR CUSTOM INTERNAL CONNECTIONS
 PLEASE CONTACT THE MANUFACTURER FOR FURTHER DETAILS

D05 DESIGNATION **A-TP-**-4T** PORT TYPE
 TAPPING PLATE DESIGNATION **4T-.437-20 SAE THREAD**
 PORTS TO BE TAKEN EXTERNALLY



NOTE: A PLATE IN THIS CONFIGURATION IS ALSO AVAILABLE FOR CUSTOM INTERNAL CONNECTIONS
 PLEASE CONTACT THE MANUFACTURER FOR FURTHER DETAILS



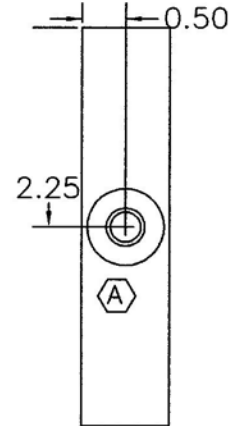
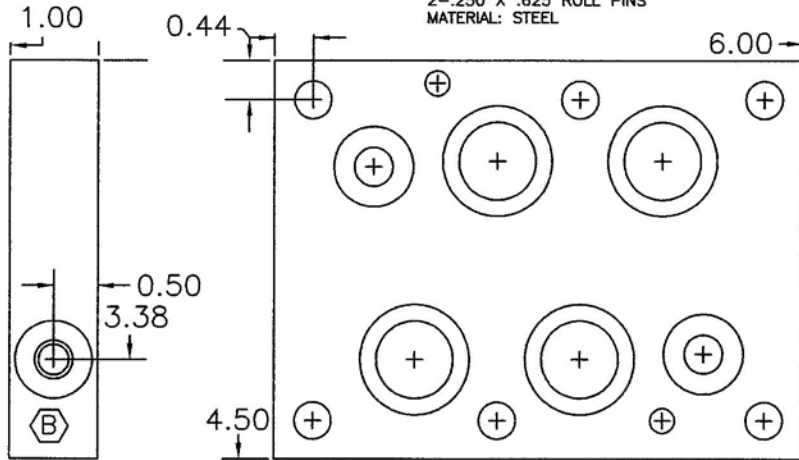
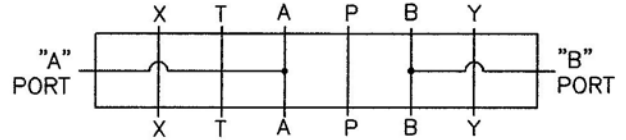
MED-KAS HYDRAULICS, INC.
 P.O. BOX 1163 1419 JOHN R
 TROY, MI. 48099 TROY, MI. 48083
 TEL: 248-585-3220 FAX # 248 585-0646
 WEB SITE: www.med-kas.com E-MAIL: info@med-kas.com

TAPPING PLATES

SEE TECHNICAL INFORMATION SECTION FOR VALVE MOUNTING DIMENSIONS

PART NO. CV-TP-AB-4T
 D08 DESIGNATION CV-TP-AB-4T
 TAPPING PLATE DESIGNATION CV-TP-AB-4T
 PORT TYPE 4T- .437-20 SAE THREAD
 PORTS TO BE TAKEN EXTERNALLY

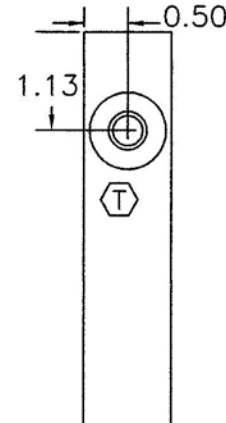
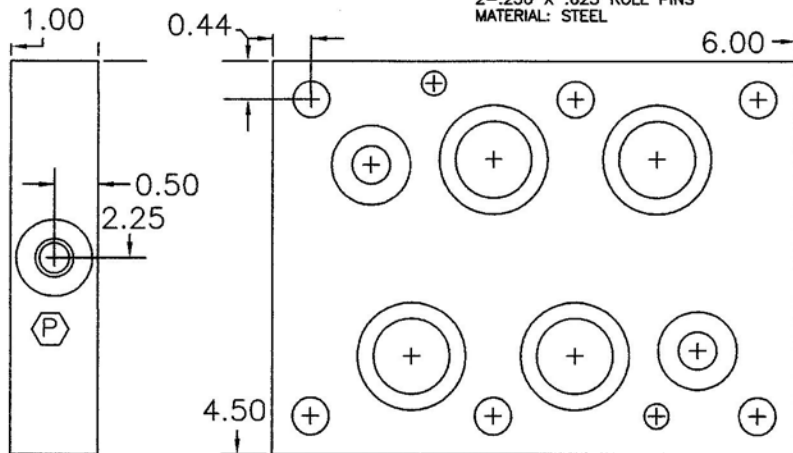
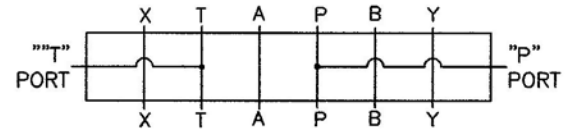
TAPPING PLATE INCLUDES:
 2-#210 O'RINGS
 4-#214 O'RINGS
 2-.250 X .625 ROLL PINS
 MATERIAL: STEEL



NOTE: A PLATE IN THIS CONFIGURATION IS ALSO AVAILABLE FOR CUSTOM INTERNAL CONNECTIONS
 PLEASE CONTACT THE MANUFACTURE FOR FURTHER DETAILS

PART NO. CV-TP-PT-4T
 D08 DESIGNATION CV-TP-PT-4T
 TAPPING PLATE DESIGNATION CV-TP-PT-4T
 PORTS TO BE TAKEN EXTERNALLY
 PORT TYPE 4T- .437-20 SAE THREAD

TAPPING PLATE INCLUDES:
 2-#210 O'RINGS
 4-#214 O'RINGS
 2-.250 X .625 ROLL PINS
 MATERIAL: STEEL



NOTE: A PLATE IN THIS CONFIGURATION IS ALSO AVAILABLE FOR CUSTOM INTERNAL CONNECTIONS
 PLEASE CONTACT THE MANUFACTURE FOR FURTHER DETAILS



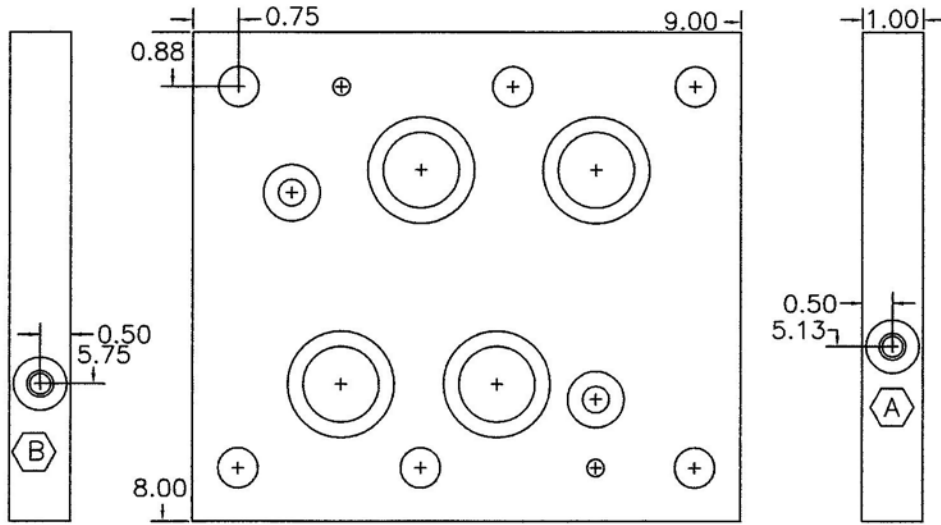
MED-KAS HYDRAULICS, INC.
 P.O. BOX 1163 1419 JOHN R
 TROY, MI. 48099 TROY, MI. 48083
 TEL: 248-585-3220 FAX # 248 585-0646
 WEB SITE: www.med-kas.com E-MAIL: info@med-kas.com

SPECIFICATIONS SUBJECT TO CHANGE WITHOUT NOTICE

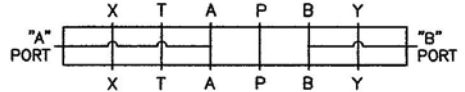
TAPPING PLATES

SEE TECHNICAL INFORMATION SECTION FOR VALVE MOUNTING DIMENSIONS

PART NO. D-TP-AB-4T
 D10 DESIGNATION TAPPING PLATE DESIGNATION
 PORT TYPE 4T- .437-20 SAE THREAD
 PORTS TO BE TAKEN EXTERNALLY



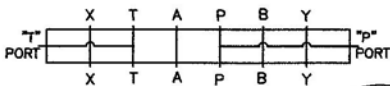
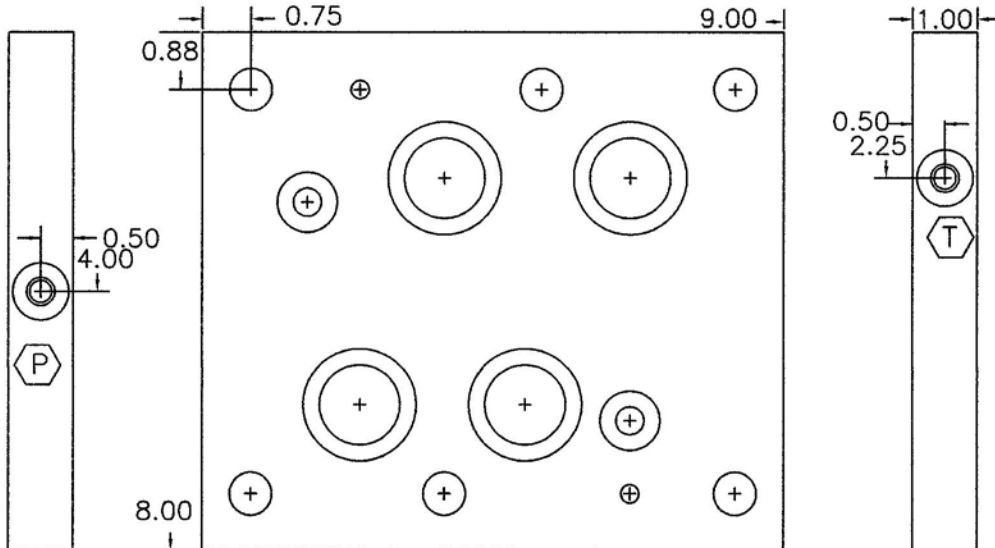
TAPPING PLATE INCLUDES:
 2-#210 O'RINGS
 4-#222 O'RINGS
 2-.250 X .625 ROLL PINS
 MATERIAL: STEEL



NOTE A PLATE IN THIS CONFIGURATION IS ALSO AVAILABLE FOR CUSTOM INTERNAL CONNECTIONS
 PLEASE CONTACT THE MANUFACTURE FOR FURTHER DETAILS

TAPPING PLATE INCLUDES:
 2-#210 O'RINGS
 4-#222 O'RINGS
 2-.250 X .625 ROLL PINS
 MATERIAL: STEEL

PART NO. D-TP-PT-4T
 D10 DESIGNATION TAPPING PLATE DESIGNATION
 PORT TYPE 4T- .437-20 SAE THREAD
 PORTS TO BE TAKEN EXTERNALLY



NOTE A PLATE IN THIS CONFIGURATION IS ALSO AVAILABLE FOR CUSTOM INTERNAL CONNECTIONS
 PLEASE CONTACT THE MANUFACTURE FOR FURTHER DETAILS



MED-KAS HYDRAULICS, INC.
 P.O. BOX 1163 1419 JOHN R
 TROY, MI. 48099 TROY, MI. 48083
 TEL: 248-585-3220 FAX # 248 585-0646
 WEB SITE: www.med-kas.com E-MAIL: info@med-kas.com